

PLAT OF **PIPERS GLEN A-3**

A PART OF PIPERS GLEN, A P.U.D.

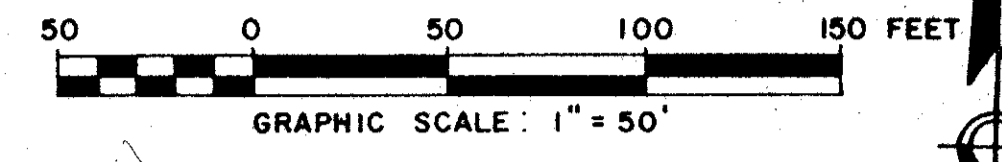
LYING IN SECTION 2, TOWNSHIP 46 SOUTH, RANGE 42 EAST, PALM BEACH COUNTY, FLORIDA. BEING A REPLAT OF PORTIONS OF HOUSING TRACT "A2" & RECREATION TRACT "2" OF PIPERS GLEN PLAT N°1 (P.B. 43 PGS. 97-101); PUBLIC RECORDS OF PALM BEACH COUNTY, FLORIDA.

OCTOBER 1988

174
STATE OF FLORIDA
CLERK OF PALM BEACH

This instrument was filed for record at _____ M. this _____ day of _____, 19____, and duly recorded in official record book _____ on page _____.

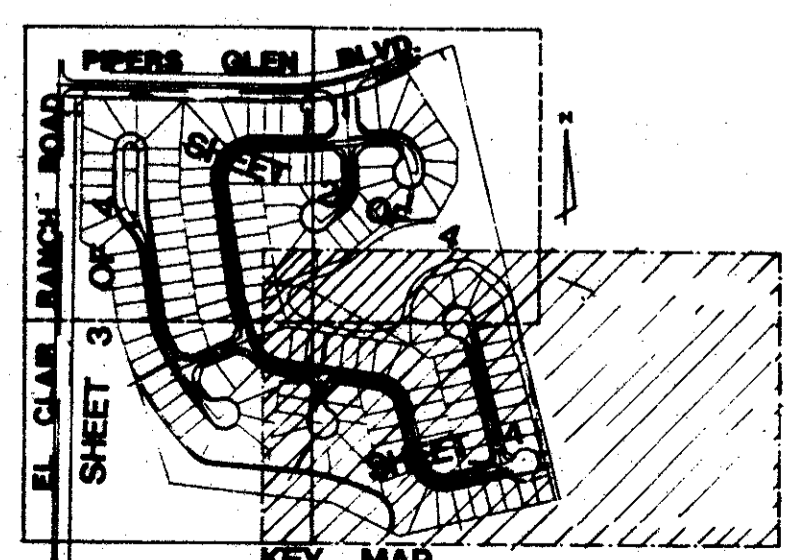
JOHN B. DUNKLE,
Clerk Circuit Court
BY: _____, D.C.



2/16/40
205B
BOOK 61 B
PAGE 34
5086
SUBDIVISION Pipers Glen A-3
PUB. NAME
DATE

- LEGEND:**
- DENOTES PERMANENT REFERENCE MONUMENT (SET)
 - DENOTES PERMANENT REFERENCE MONUMENT (FOUND)
 - DENOTES PERMANENT CONTROL POINT
 - U.E. DENOTES UTILITY EASEMENT
 - D.E. DENOTES DRAINAGE EASEMENT
 - L.M.E. DENOTES LAKE MAINTENANCE EASEMENT

GOLF COURSE PROPERTY RECREATION TRACT "2" (PB 43, PGS 97-101 PIPERS GLEN PLAT N°1.) (RECORDS OF PALM BEACH COUNTY, FLORIDA.)



BEARING BASE:
THE EAST-BY-RIGHT-OF-WAY LINE OF EL CLAIR LANE AS SHOWN ON THE PLAT HEREBY REPLATED BY A REGISTERED PROFESSIONAL ENGINEER REPRESENTING SHALLOWAY, SCHOFIELD, RAYMAN & NEVELL, INC.

THIS INSTRUMENT PREPARED BY **R. LEE** IN THE OFFICE OF:

SHALLOWAY DATE 10-8-87
DRAWN A.R. CHECKED G.R.
JOB NO. 86077

Copyright 1988 By Shalloway, Foy, Schofield, Rayman & Nevell, Inc. This Drawing Provided for Informational Purposes Only. Unless Signed and Sealed By A Registered Professional Engineer Representing Shalloway, Schofield, Rayman & Nevell, Inc.

0298-004

61/174

4/4